



DIESEL DEFENCE MOBILE DDM SYSTEM

DIESEL DEFENCE DDM SYSTEMS – DDM6

The DDM Systems are a high-performance fuel polishing range that represents a major step forward in protecting diesel fuel from harmful contaminants in storage tanks. With a pump capacity of 500L/pm the DDM6 units are suitable for total tank capacities up to 500,000 Litres*

At the forefront of fuel cleanliness innovation, the DDM Fuel Polishing Buggies are a versatile fuel filtration system designed to deliver maximum performance within a compact footprint. Incorporating leading high-capacity particulate filtration principals, both solid and bacterial contaminants are removed from your fuels with ease.

Clean large, dispersed fuel tanks quickly with a single mobile unit.

Experience unparalleled performance and affordability with our high-efficiency filter cells, ensuring cleanliness levels of ISO 18/16/13 or better.

Worried about water contamination? Our cutting-edge Filtasorb2 cells excel in removing all free water and 99.9% of entrained water, achieving an impressive 100ppm or less. For on-site verification of cleanliness levels, our practical quick-connect fittings enable instant plug-in to an Inline Contamination Analyzer, delivering real-time results in ISO/NAS/SAE standards within minutes.



Introducing the DDM6 mobile unit, equipped with an exceptionally powerful pump boasting a maximum flow rate of 500 liters per minute (lpm). Its advanced three-stage filtration system ensures the removal of even the most persistent contaminants. Perfect for large-scale operations, the DDM6 is the ideal solution for data centres, hospitals, and corporate campuses. Upgrade your facility's efficiency and cleanliness with the DDM6 today!

Our advanced HMI control panel offers unparalleled flexibility and system monitoring, complete with fault alarms and seamless operation

*Tank Capacity sizes are dependent upon duty rate selected. Consult with IPU Group when sizing polisher.

**The DDM series have different sizes of filters to tackle specific application requirements.

Special arrangements available on request.

DDM6

FEATURES



Powerful pump with high flow rates up to 500 L/min

- Suitable for cleaning tanks up to 500,000 Litres in a single working day

Dual Stage filtering solution for particulate or water removal

- 2 Parallel runs of three stage filtration:
 - Stage 1 – FiltaSolid - 1µm at 99.9% efficiency
 - Stage 2 – FiltaSolid - 10µm at 99.9% efficiency
 - Stage 2 – FiltaSorb - water removal, achieving 100ppm or less.
(Factory standard supplied media)
- Isolation valves for each run

High-Capacity Size 2 Filters

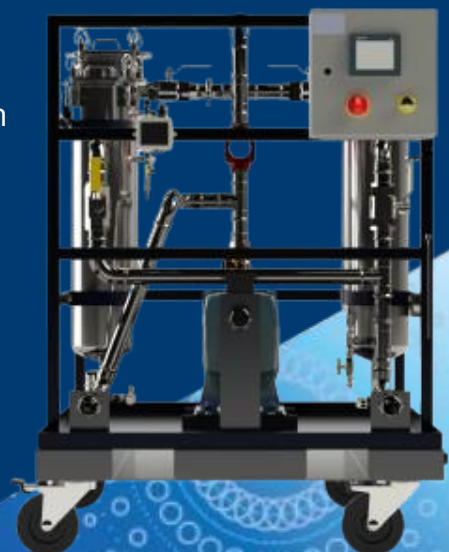
- Nominal Dimensions: 7.06 in. (17.93 cm) x 32.0 in. (81.28 cm)
- High Flow Rate Performance
- Differential Pressure Sensor monitoring clogged state
- Stainless Steel Construction

Lightweight and Portable

- Aluminium Frame Construction
- Rugged frame with integral drip tray, Bund alarm
- All terrain castor swivel wheels

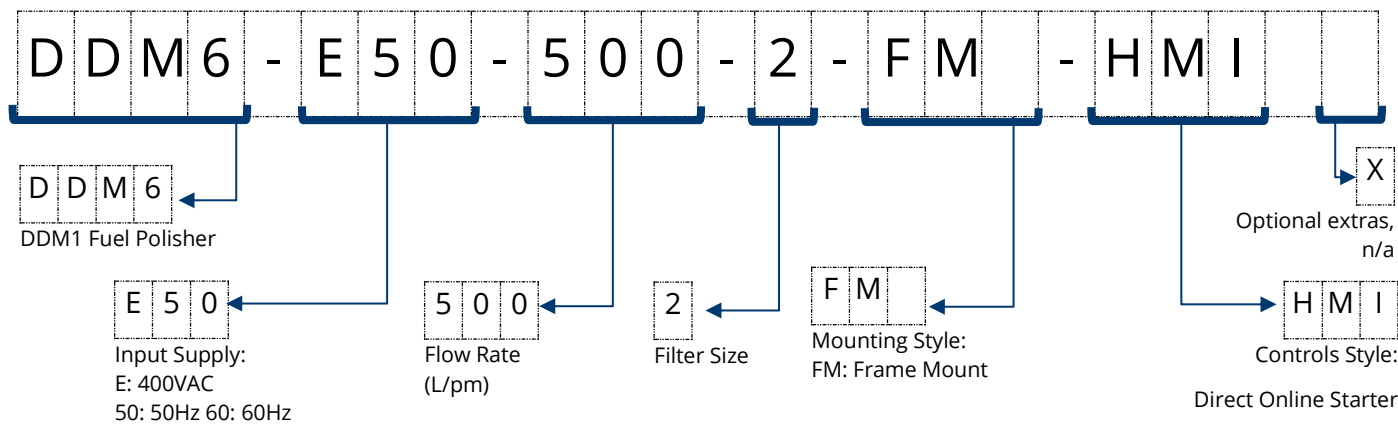
Visual Alert to System Alarms

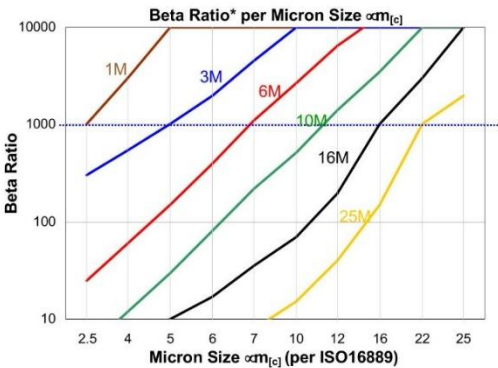
Programmable Run Timer

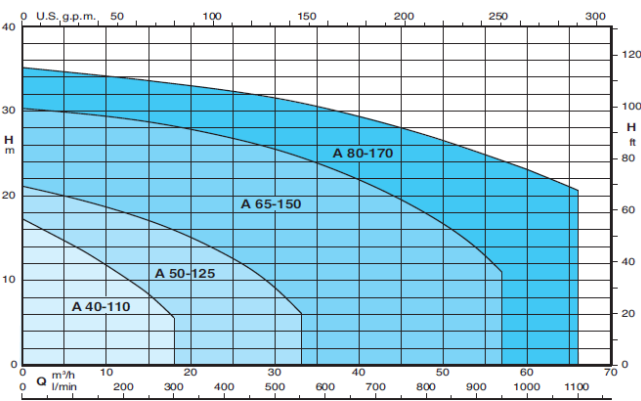


DIESEL DEFENCE DDF SYSTEM

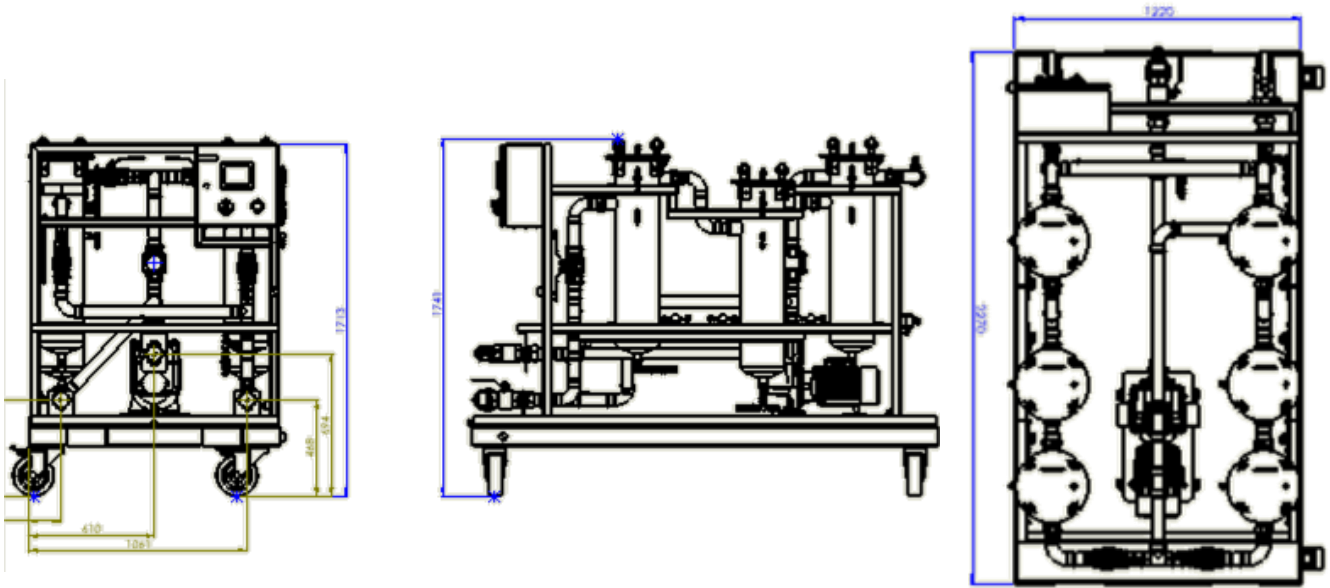
HOW TO ORDER



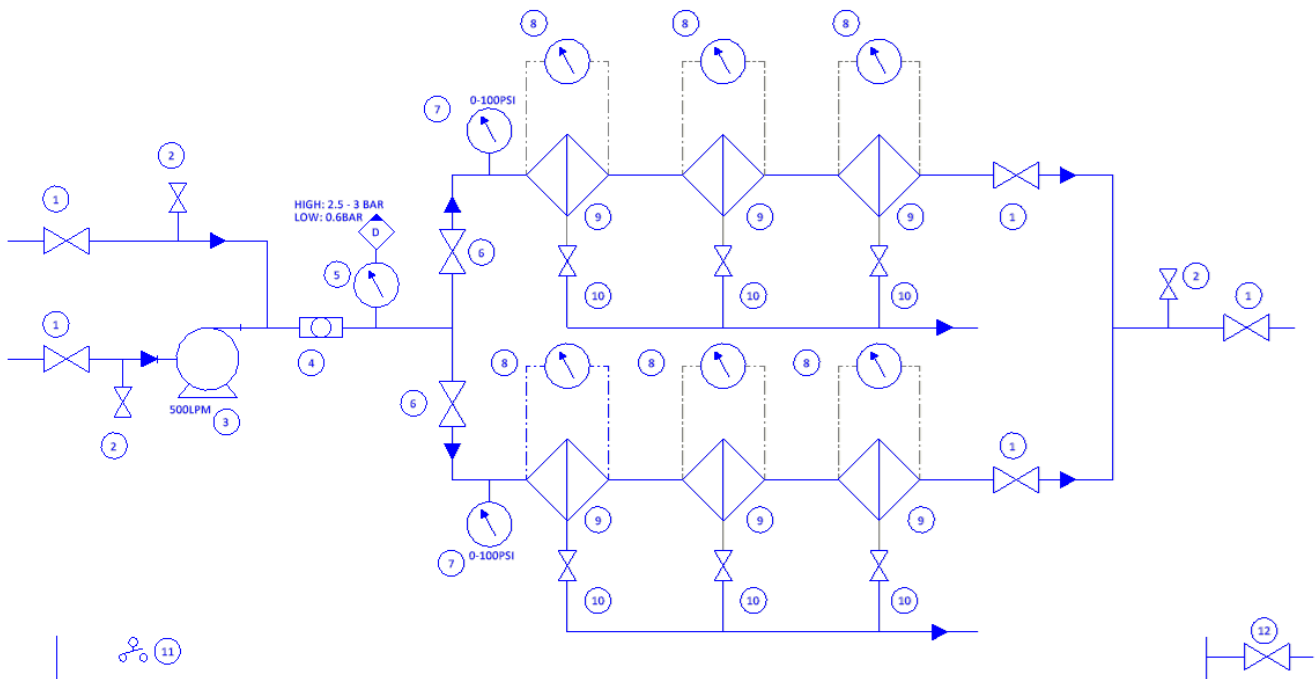
SYSTEM			
Model Number	DDM6-E50-500-2-FM-HMI		
Dimensions (H) x (W) x (D)	1792mm x1160mm x 2270mm		
Weight	600Kg		
Finish	Power Coated: RAL5004 Blue Black		
Operating	-20°C - +60°C		
Conditions	<90% RH		
Environment	HMI Control Panel – IP65		
Connections	Inlet: 2” Camlock Male		
	Filter Bypass; 2” Camlock Male		
	Outlet: 2” Camlock Male		
FILTRATION			
Fluid Compatibility	Diesel & mineral oils		
Media	Stage 1 – 10 micron* Stage 2 – Water* (*Factory sard)		
			
Dirt Holding Capacity (grams)	1 µm 488	3 µm 610	>=5 µm 910

Filter Clogged Indicator	Electronic via Control Panel
ELECTRICAL	
Voltage/Frequency	400V (±10%) / 50Hz supplied with 5-Pin Red Industrial Plug (3M)
Motor Current	9A
Motor Protection	Monitored Overload Protection
PUMP	
Flow	Max 500L/pm
Type	Self-priming Centrifugal (A65-150)
Duty Cycle	Continuous
Noise Level	<85dB @ 1M
	
Pump Performance Curve	
ALARMS	
Filter Clogged	6 off Differential Pressure Gauge
Flow Detection	N/A
Leak Detection	1 Off bund float switch
Motor Overload	1 off N/O switch, internally resettable

LAYOUT DRAWINGS



P & ID



TRUSTED KNOWLEDGE. TAILORED SOLUTIONS.

How well you understand a problem defines how well you solve it. Speak to an IPU technical specialist about fuel polishing and, after asking some astute questions, they'll provide a tailored solution you can trust - backed by years of industry experience and engine know-how.



More details at www.ipu.co.uk

IPU Group, Cygnus Way, West Bromwich,
West Midlands, B70 0XB. Telephone +44 (0)121 511 0400



DIESEL DEFENCE AND OIL FILTRATION MOBILE SYSTEMS

SYSTEM ADD-ONS

Inline Contamination Monitor (ICM).

The ICM automatically measures particulate contamination, moisture, and temperature levels in various hydraulic fluids. It is designed specifically to be mounted directly to systems, where ongoing measurement or analysis is required, and where space and costs are limited. The device is calibrated to relevant ISO standards.



INLINE CONTAMINATION MONITOR	
Technology	Precision LED Based Light Extinction Automatic Optical Particle Analyser
Particle Sizing	>4,6,14,21,25,38,50,70 µm(c) to ISO 4406:1999 Standard
Reporting Formats	ISO 4406:1999 (ICM Default) NAS1638 AS4059E Table 2 AS4059E Table 1 ISO 11218
Accuracy	±½ ISO code for 4,6,14µm(c) ±1 code for 21,25,38,50,70 µm(c)
Moisture & Temperature Measurement	% saturation (RH) and fluid temperature(°C)
Viscosity Range	<1000 cSt
Data Storage	Up to 4000 timestamped tests in the integral ICM memory. Up to 20,000 timestamped

Single Configuration



option code

A single ICM is installed at the inlet side of the system, providing information on the quality of media pre filtration.

Flow Transmitter

The Turbine Digital Flow Transmitter is designed to be installed inline to the system. These turbine flow meters have rugged housing, and a sealed electronic board make it a durable meter for use in many conditions.

- Accuracy: +/-3%
- Repeatability: 0.5%
- Nylon turbine measuring system
- Aluminium/plastic body
- +24Vdc Operated, powered from control panel



option code

TRUSTED KNOWLEDGE. TAILORED SOLUTIONS.

How well you understand a problem defines how well you solve it. Speak to an IPU technical specialist about fuel polishing and, after asking some astute questions, they'll provide a tailored solution you can trust - backed by years of industry experience and engine know-how.



More details at www.ipu.co.uk

IPU Group, Cygnus Way, West Bromwich,
West Midlands, B70 0XB. Telephone +44 (0)121 511 0400

